

FRONT ELEVATION A



FRONT ELEVATION B

OREGON
WASHINGTON
IDAHO

O.W.I.
HOMES INC.
6855 W. CLEARWATER AVE. SUITE N
KENNEWICK, WASHINGTON 99336
PHONE: (509) 737-8192
FAX: (509) 737-8503

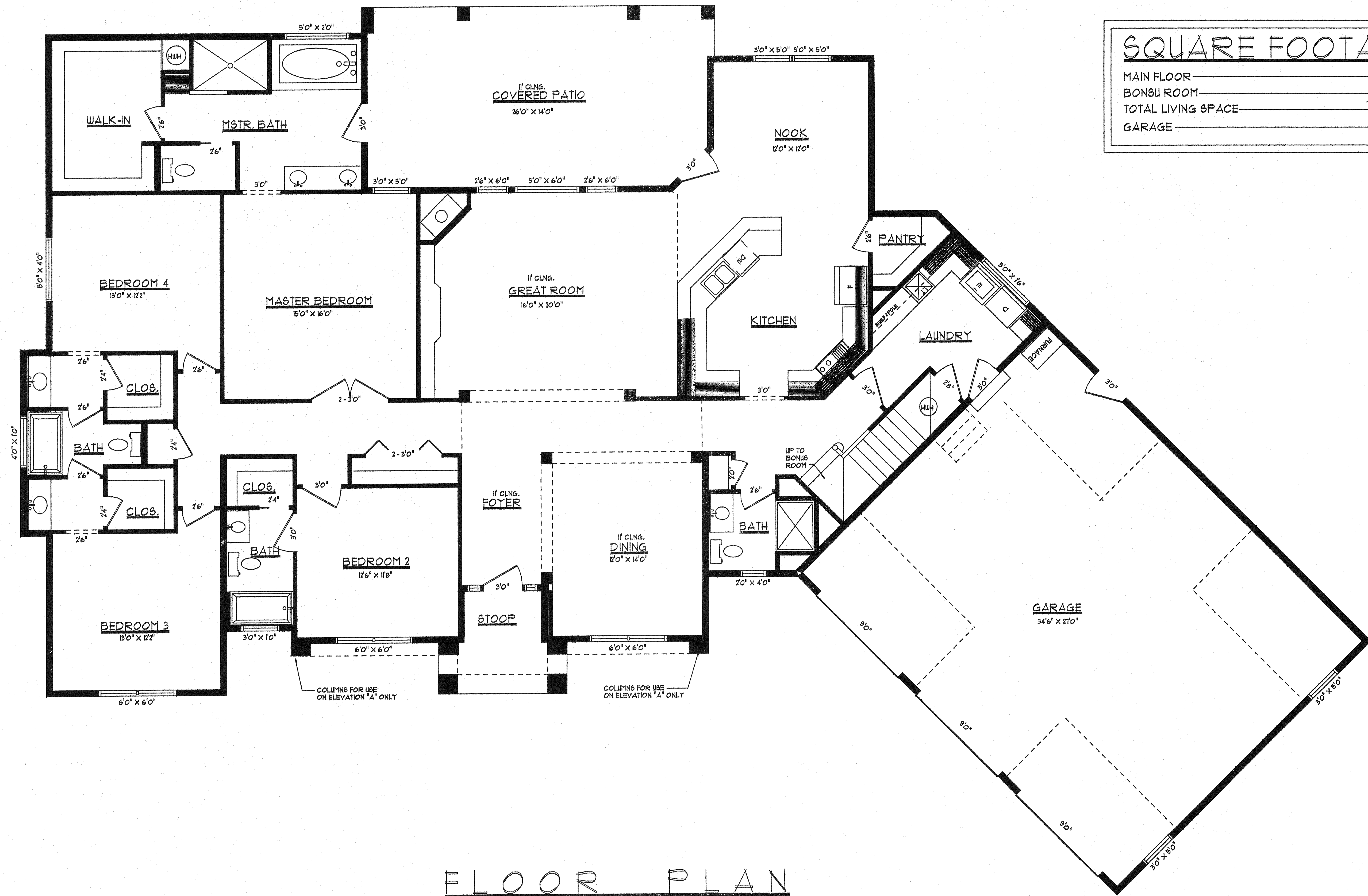
DRAWN BY: C.D. LEE
SCALE: 1/4" = 1'-0"
DATE: 07/08/08
REVISED:

LARSEN RESIDENCE

TO: 10/10/08 R.C. PLAN
THESE PLANS ARE THE PROPERTY OF O.W.I. HOMES INC. AND ARE
INTENDED FOR THE ONE TIME USE BY LICENSEE
ANY USE AND OR REPRODUCTION IN PART OR WHOLE WITHOUT WRITTEN
PERMISSION FROM O.W.I. HOMES INC. IS STRICTLY PROHIBITED

© COPYRIGHT © O.W.I. HOMES INC. 2008

SHT. 2 FRONT ELEVATION



FLOOR PLAN

SQUARE FOOTAGE	
MAIN FLOOR	2864 SQFT.
BONUS ROOM	630 SQFT.
TOTAL LIVING SPACE	3494 SQFT.
GARAGE	985 SQFT.

OREGON
 WASHINGTON
 IDAHO
 O.W.I. HOMES INC.
 6855 W. CLEARWATER AVE. SUITE N
 KENNEWICK, WASHINGTON 98336
 PHONE: (509) 331-8192
 FAX: (509) 331-8503

DRAIN BY: C.D. LEE
 SCALE: 1/4" = 1'-0"
 DATE: 07/08/08
 REVISED:

LARSEN RESIDENCE
 10-16 2006 IRC PLAN
 THESE PLANS ARE THE PROPERTY OF O.W.I. HOMES INC. AND ARE
 INTENDED FOR THE ONE TIME USE BY LICENSEE
 ANY USE AND OR REPRODUCTION IN PART OR WHOLE WITHOUT WRITTEN
 PERMISSION FROM O.W.I. HOMES INC. IS STRICTLY PROHIBITED.
 © COPYRIGHT © O.W.I. HOMES INC. 2008
 SHT. 1 FLOOR PLAN